

JURON
BY GRS®





BY GRS®

GRS is proud to introduce the new Jura by GRS line of tools for stone setters and jewelry artists. This is a perfect collaboration between innovation and quality manufacturing.

A world-renowned diamond setter, Jura has made his name with precise setting and unimaginably complex designs. He has faced the challenges unique to stone setting and designed innovative solutions to overcome those challenges. Jura's system is ergonomically conscious for long hours at the bench and creates an environment for maximum efficiency. These tools will revolutionize your workflow.

C O N T E N T S

CLASSIC QUICK CHANGE WORKHOLDING **2**

3X WORKHOLDING **12**

MUST HAVES **20**

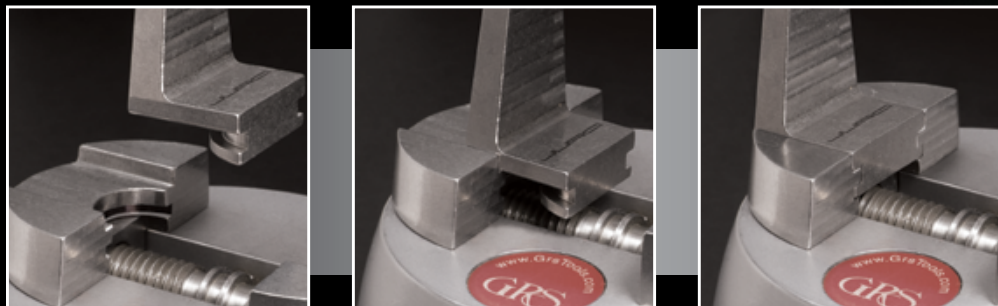
ORGANIZERS & SMALL GOODS **22**

GRAVERS & ACCESSORIES **25**

DEALER DIRECTORY **26**

CLASSIC QUICK CHANGE WORKHOLDING

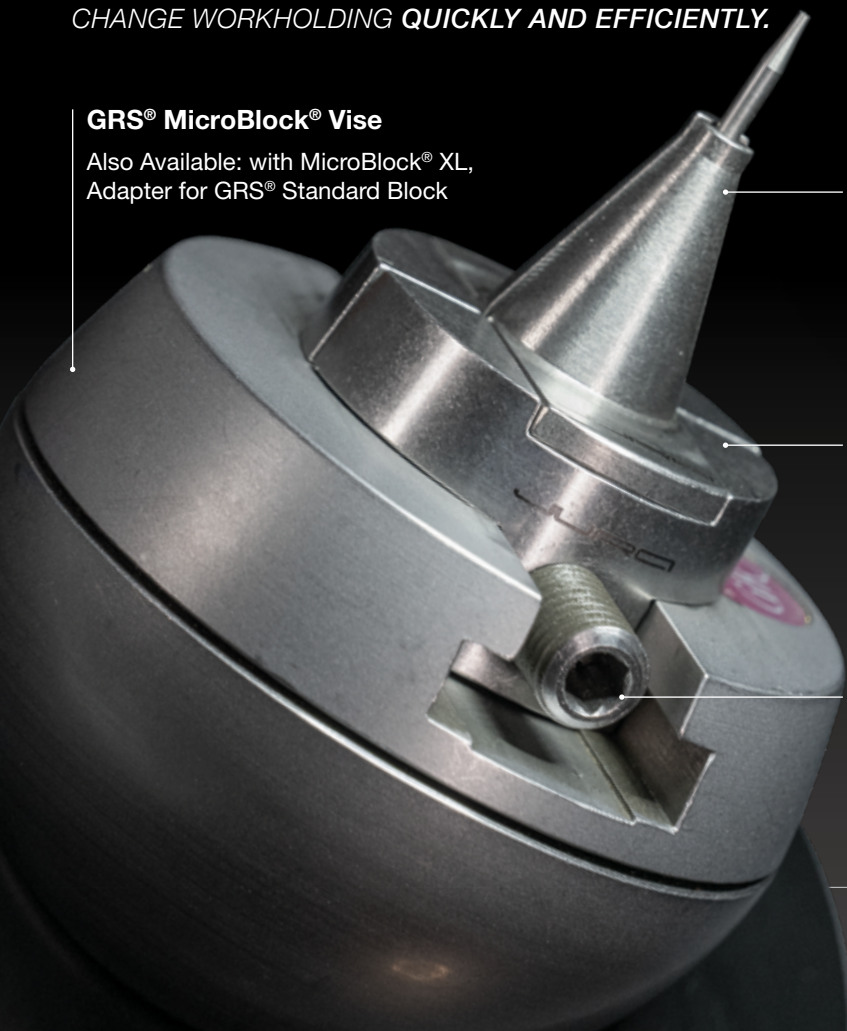
QC FIXTURE TABS SLIDE EASILY INTO THE MASTER JAWS.



CHANGE WORKHOLDING QUICKLY AND EFFICIENTLY.

GRS® MicroBlock® Vise

Also Available: with MicroBlock® XL,
Adapter for GRS® Standard Block



QC Workholding Fixtures

Shown: 6mm Top with Groove

Master Jaws

Connect multiple fixtures

5 mm Hex Key

Not shown

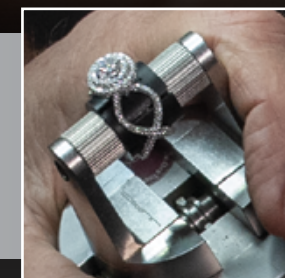


"If I can hold it, I can set it."

—Jura



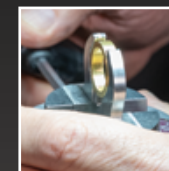
JURA CLAMPS
for horizontal fixtures



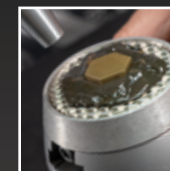
20 MM
ROUND TOP



OUTSIDE RING
HOLDER



SHELLAC
PLATE



DRILL HEAD
HOLDER



FLAT CLAMPS
WITH GROOVE



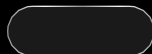


WATCH THE VIDEO



QC Basic Set With MicroBlock®

500-508



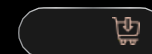
The Basic Set is ideal for artists working with rings. It utilizes the Jura Master Jaws and Quick Change fixtures to create a system that has been designed for ultimate work efficiency. The QC approach allows you to switch fixtures in just seconds. The horizontal ring holder has an independent locking system, allowing separate tension adjustments for the collet and the rotation of the ring. The vertical ring holder is a simple and effective vertical ring solution. Ten expandable collets ensure finding the correct size for your work (Sizes 13–22 mm). A grooved set of flat clamps will hold practice plates and other flat items both square and round. They can also be used for holding beading tools for polishing and sharpening.

MicroBlock® with Jura Master Jaws, Small Vise Base, 5 mm Hex Key, Organizer, and the following QC Fixtures: Horizontal Inside Ring Holder, Vertical Inside Ring Holder, 10 Plastic Collets, and Flat Clamps with Groove.



QC Complete Set With MicroBlock®

500-510



The Complete Set expands upon the Basic Set and includes an amazing assortment of workholding solutions for any setter. Specialized clamps are ideal for uniquely-shaped projects, including rings, pendants, earrings, bur sharpening, drill making, and beading tool sharpening. Grooved jaws allow you to quickly remove the workpiece and re-sharpen beading tools in one fixture. Each jaw can be customized using Thermo-Loc® for production-style setting. Straight top (20 and 40 mm) fixtures provide access for multi-sided setting. Brass points can be customized to hold a variety of things, including sphere-shaped items. Shellac and Thermo-Loc® cylinders provide support for fragile ring work.

MicroBlock® with Jura Master Jaws, Small Vise Base, 5 mm Hex Key, Organizers, and the following QC Fixtures: Horizontal Inside Ring Holder, Vertical Inside Ring Holder, 10 Plastic Collets, Flat Clamps with Groove, Outside Ring Holder, 6 mm Cylinder Top with Groove, 10 mm Cylinder Top, 20 mm Round Top, 20 mm Straight Top, 40 mm Straight Top, Engravers Clamps with 2.35 mm Holes, Thermo-Loc® Engravers Clamps, Shellac Plate, Thermo-Loc Cylinder, Shellac Cylinder, Tapered Point Holders, and Tapered Ball Holders.

*Also Available:
Without MicroBlock®*

500-509

For GRS® Standard Block

500-512

With MicroBlock® XL

500-526

*Also Available:
Without MicroBlock®*

500-511

For GRS® Standard Block

500-513

With MicroBlock® XL

500-527





QC Advanced Set with MicroBlock®

500-517



The Advanced Set is the most complete workholding system on the market. Jura has designed workholding solutions for almost any job. This system saves the user from the time and frustration of figuring out how to properly hold a piece for setting or jewelry engraving. In addition to workholding solutions, this set includes a variety of useful accessories. The hand chucks are perfect for use with beading tools, burnishers, bead splitters and more. The digital dividers and ceramic scribe are useful for precision layout. Tweezers and a carbide pick are great accessories that will serve many purposes in your daily work.

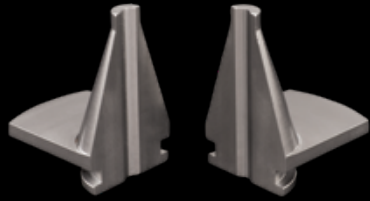
MicroBlock® with Jura Master Jaws, Small Vise Base, 5 mm Hex Key, Organizer, and the following QC Fixtures: Horizontal Inside Ring Holder, Vertical Inside Ring Holder, 10 Plastic Collets, Flat Clamps with Groove, Outside Ring Holder, 6 mm Cylinder Top with Groove, 10 mm Cylinder Top, 20 mm Round Top, 20 mm Straight Top, 40 mm Straight Top, Engravers Clamps with 2.35 mm Holes, Thermo-Loc® Engravers Clamps, Shellac Plate, Thermo-Loc Cylinder, Shellac Cylinder, Tapered Point Holders, Tapered Ball Holders, and Drill Head Holder. It also includes 10 Hand Chucks, Digital Dividers, a Ceramic Scribe, Tweezers, and a Carbide Pick.



Vertical Ring Holder & Plastic Collets

Included with all QC Sets, plastic collets sold separately starting on [page 24](#)

QC WORKHOLDING FIXTURES

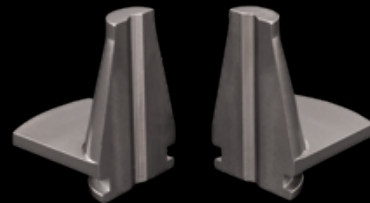


6 mm Cylinder Top

500-001

Ideal for making tools, holding small workpieces, and more.

Fits QC Classic or 3X Vise

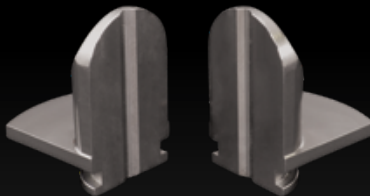


10 mm Cylinder Top

500-002

Good for clamping small work pieces such as earrings.

Fits QC Classic or 3X Vise

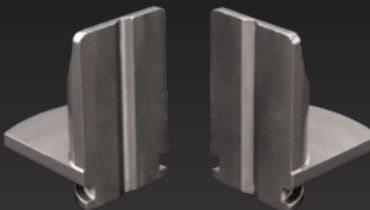


20 mm Round Top

500-003

Designed to hold rings, round pendants, and more.

Fits QC Classic or 3X Vise

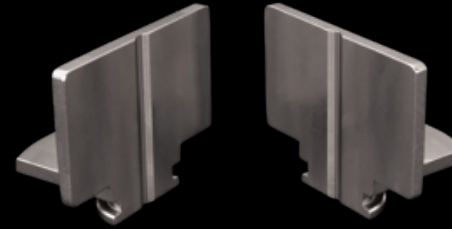


20 mm Straight Top

500-004

This mid-sized clamp creates ideal workholding for multi-sided setting.

Fits QC Classic or 3X Vise

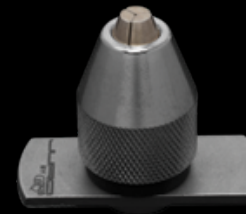


40 mm Straight Top

500-005

This wide clamp creates ideal workholding for multi-sided setting.

Fits QC Classic or 3X Vise

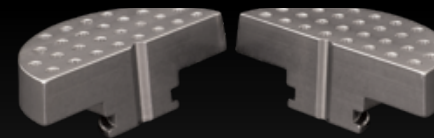


Drill Head Holder

500-501

Use this vertical chuck to custom-make tools such as beading tools, drills, and more. Also great for holding work such as earrings.

Fits QC Classic or 3X Vise



Engraver's Clamp with 2.35 mm Holes

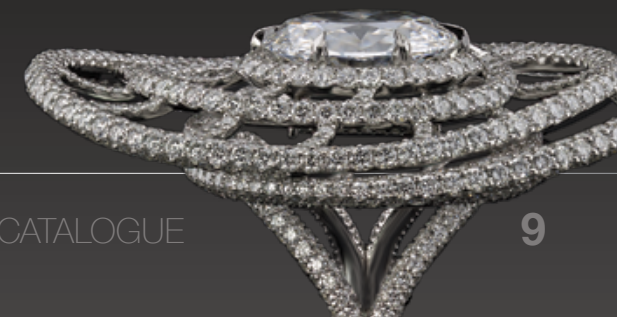
500-006

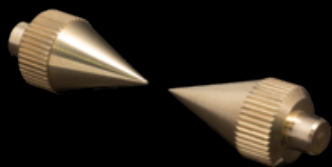
A set of vise jaws made specifically for the QC Master Jaws. This allows the artist to switch quickly back to a traditional set of vise jaws without having to unthread. The pin holes measure 2.35 mm.

Fits QC Classic or 3X Vise



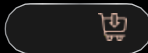
WATCH THE VIDEO





Tapered Point Holders

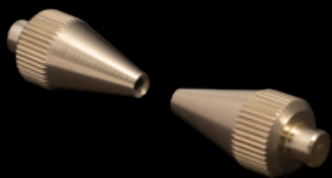
500-506



Easily customized to create precise tension points on your work.

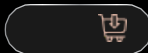
For use in horizontal ring clamps (#500-010).

WATCH THE VIDEO



Tapered Ball Holders

500-507



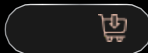
Ideal for holding spheres and round-shaped pieces.

For use in horizontal ring clamps (#500-010).



Shellac Cylinder

502-015



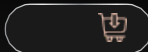
Use with Shellac to hold rings.

For use in horizontal ring clamps (#500-010).



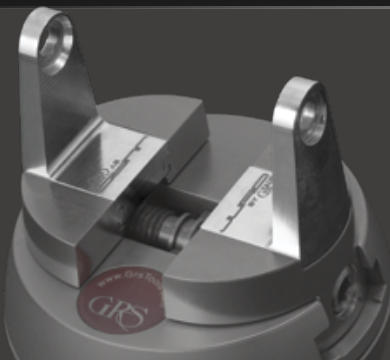
Thermo-Loc® Cylinder

502-502



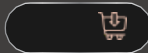
Use with Thermo-Loc to hold rings.

For use in horizontal ring clamps (#500-010).

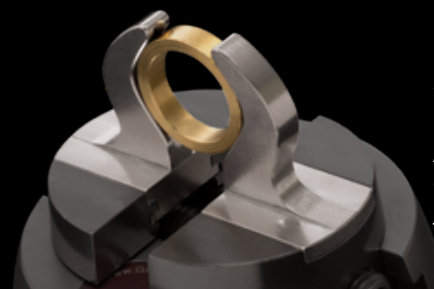


Horizontal Ring Clamps

500-010

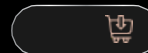


Horizontal Ring Clamps is a key piece of the Jura Basic Set. It works to hold work horizontally when paired with the Brass Cones, Shellac Cylinder, Thermo-Loc Cylinder, and Inside Ring Holder Screw Set.



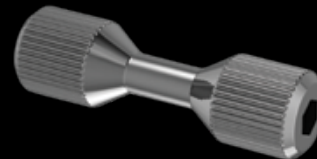
Outside Ring Holder

500-009



A simple and efficient ring clamp. Great for focusing on a smaller portion of the piece or small inside ring jobs.

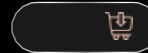
Fits QC Classic or 3X Vise



Inside Ring Holder

Screw Set

500-011



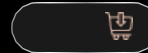
Inside Ring Holder Screw Set uses an independent tension to expand collets while holding rings. It mounts perfectly in the Horizontal Inside Ring Holder and is included in the Basic Set.



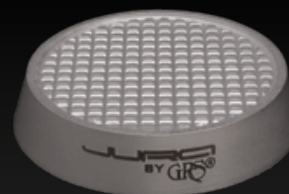
Thermo-Loc®

Engraver's Clamp

500-013

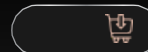


Use with Thermo-Loc to hold a variety of uniquely-shaped pieces.



Shellac Plate

500-014



Use with shellac to hold uniquely-shaped pieces. The unique texture of the fixture helps to secure the shellac while working.

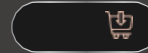


WATCH THE VIDEO



Adapter for GRS® Standard Block

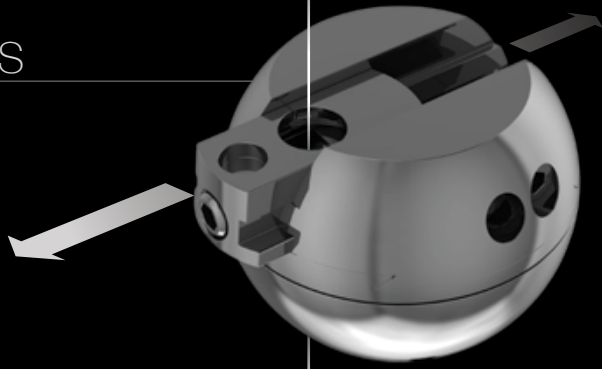
500-008



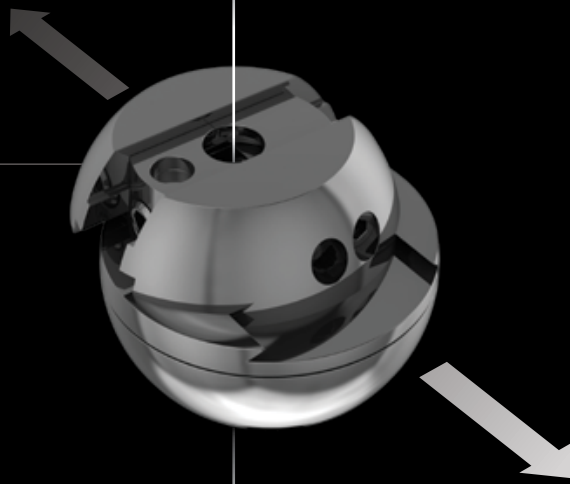
Utilize the entire Jura QC Workholding System in your GRS Standard Block. Quickly drops into the pin holes of your Standard Block.

STAY CENTERED

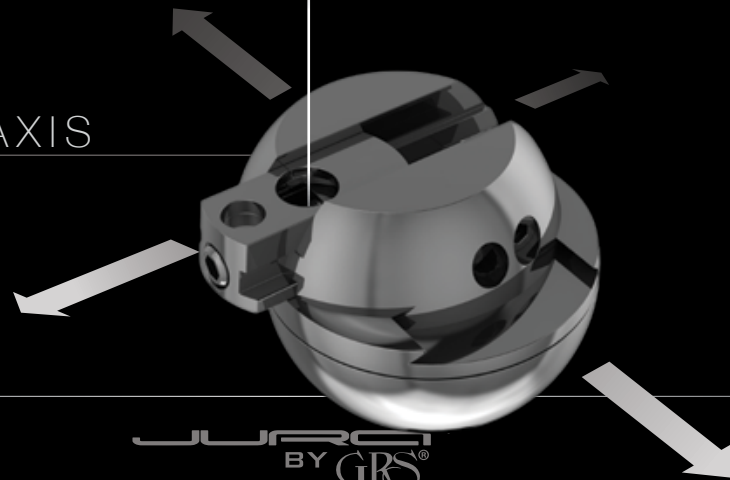
X AXIS



Y AXIS



X+Y AXIS



3X HOLDER ADDS
THREE AXES



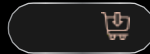
JURA 3X LINE

WATCH THE VIDEO



3X Starter Set

502-516



The 3X Starter Set is one of the most innovative workholding solutions to hit the jewelry industry. By creating a multi-axis approach, your work will never be out of center again. This system utilizes movement in every direction to ensure unlimited access. For setters using a microscope, this product will save time and frustration. The set comes with the 3X Holder which allows the user to pivot and manipulate the ring to the exact position desired. The orbital ball creates additional versatility, not just for ring holding, but can be used with other attachments in the 3X Line. Robust brass collets will ensure sturdy holding of rings. Jura Stackable Bases will keep work at a proper height depending on the attachment.

XY Ball, Set of Jura Stackable Bases, 5 mm Hex Key, 3X Holder, 11 Brass Collets, 10 Plastic Collets, M6 Screw, Radius Divider, Orbital Jaws and Orbital Ball.

Mini Chuck

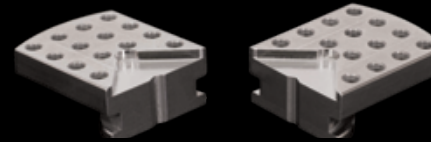
502-505



Remain efficient during the work process with this great little drop-in attachment for making tools or holding work chuck-style.

Flat Clamps with Pin Holes

502-078

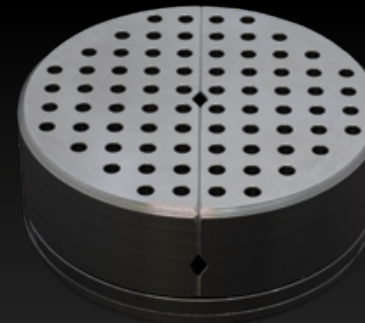


This fixture holds flat plates or flat, round pendants. Accommodate larger pieces by placing pins in the holes.

Fits QC Classic or 3X Vise

Pin Vise

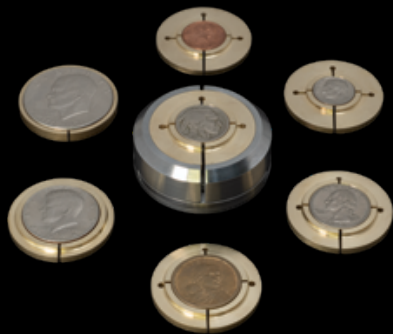
502-507



This pin vise was designed to be used with the 3X Orbital Holder (included with the 3X Starter Set). By using the traditional design of a pin vise and adding the orbital approach, the user can clamp their work and keep it in center while also being able to tilt the pin vise.

WATCH THE VIDEO





Hobo Nickel Holder

502-508



The Hobo Nickel Holder uses a unique brass collet system that has been designed specifically for the most popular coins artists work with. The outer portion of the vise provides a sturdy clamping system to reduce vibration. By attaching the orbital ball to the bottom, the artist gains the ability to tilt the fixture while being able to rotate their vise, keeping the working area centered under the microscope.

Coins not included

Collets for Penny, Dime, Nickel, Quarter, Dollar, Half Dollar, Eisenhower Dollar

WATCH THE VIDEO



Watch Bracelet Fixture

523-520



This cylindrical fixture provides a great workholding solution for setting and engraving watch bands. Use with the horizontal ring clamps or the 3X Master Clamps for easy access to your work.

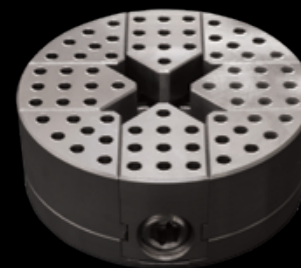


Thermo-Loc® Clamps

502-518



Utilize the 3X System while holding odd-shaped pieces. Designed to help keep Thermo-Loc in place and your work secure.



4-Jaw Chuck

502-509



This robust and versatile fixture is the ultimate holding option for uniquely-shaped items. Four independent jaws can be adjusted in a variety of different configurations to hold your work securely.

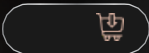
WATCH THE VIDEO





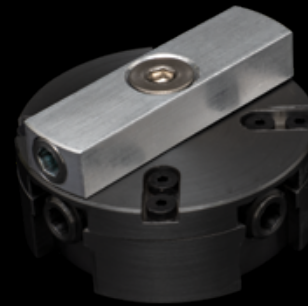
Shellac Plate

502-082



Secure your work using shellac and take advantage of the benefits of using the 3X System.

WATCH THE VIDEO



Aluminum Adapter Block

500-545



Turn any 3X workholding fixture into a tool that can be used in standard vise jaws. The Aluminum Adapter Block can be attached using the threads on the bottom of the 3X fixtures, allowing them to be clamped in any vise.

WATCH THE VIDEO



Shellac Tubes

502-506



Shellac Tubes drop into the 3X Master clamps to hold small pieces such as earrings, pendants, or other items. The ability to use two shellac tubes at a time allows for greater efficiency. Available in four sizes to save time heating.

(1) 39 mm tube, (2) 20 mm tubes, (2) 15 mm tubes, (2) 11 mm tubes

WATCH THE VIDEO



Replacement Orbital

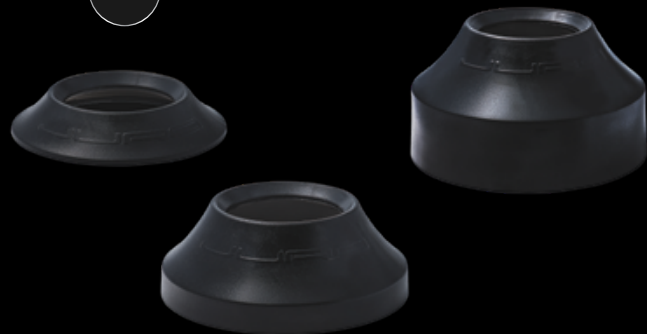
500-546



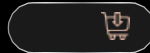
Avoid time spent switching the Orbital Balls from one fixture to another by adding these replacement balls to fixtures you use regularly in the Orbital Jaws.

Jura Stackable Vise Bases

WATCH THE VIDEO 



523-032



Set of three bases are designed to keep work at a consistent height, depending on which Jura fixture you are using. They are stackable and sturdy. This set of 3 stackable bases is included with the 3X Starter Set.

Also Sold Individually:



Small
523-017



Medium
523-018



Large
523-019

Digital Divider

523-021



This compact-style digital divider is great for precision layout. The hardened steel jaws can be sharpened to your desired points.

5 mm Hex Key

523-020



This large handle 5 mm hex key is great for getting extra leverage when tightening down your vise jaws.

Hand Chucks

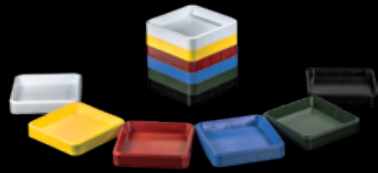
500-521



Round & Stub Head *Set of 10*

The Jura hand chucks are great for use with beading tools, bead splitters, burnishing tools, and more. The half-round handles provide a great reference point when using beading tools. The round handles are ideal for burnishing and bead splitting.





Colored Stone Trays

500-522



A set of six colored trays are perfect for separating different stone sizes and staying organized. They are stackable for space savings and designed to easily access your stones.



Stone Organizer

502-514



Keep your stones organized and in one place. Forty smaller square boxes allow you to create your own organization system within a larger box.

Micromotor Handpiece Stand

500-525



Keeping your micromotor within reach and off the bench top makes the holder a great addition to your bench.



WATCH THE VIDEO



Ceramic Scribe & Carbide Pick

523-005



This set of tools is great for doing layout and positioning stones. The ceramic scribe doesn't catch on metal like traditional scribes. The carbide pick can have many uses such as moving or adjusting stones.

Also Sold Individually:

Ceramic Scribe

523-006

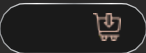
Carbide Pick

523-004



Small Goods Organizer

523-011

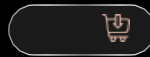


A great option to keep your tweezers, hex key, scribe, and pick within reach.

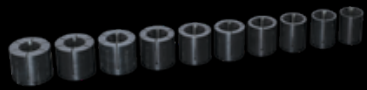


Tweezers

523-001



An ideal solution for picking up stones, drills, burs, or other items.



Plastic Collets

500-504



Replacement set of plastic collets. Fits Jura QC and 3X systems. This set of 10 collets is for rings sized 13–22 mm.



Brass Collets

502-504



This set of 11 brass collets is perfect for use with Jura QC ring fixtures. Durable construction will withstand hammering. It also includes a radius divider for quick and easy layout. This fixture is compatible with the Jura by GRS Classic QC Workholding System and the 3X Line.

**Ceramic Polishing Stones
Round 2.35 mm**

For use in micromotor handpiece when polishing and finishing. Available in three grits.



**Red/Fine
1200 Grit**

602-422

**Orange/
Rough
250 Grit**

602-426

**Blue/
Medium
800 Grit**

602-424



C-Max

Round Blank, 2.35 mm

022-393



Industry-leading carbide gravers.

Length: 45 mm. Use with Jura QC 2.35mm

MORE PRODUCTS AVAILABLE ONLINE
GRSEUROPE.COM

DEALER DIRECTORY

Austria 1:

Felber's Nachfolger

Siebensterngasse 30
1070 Vienna/Austria
Phone +43 1 523 24 73-0
www.j-felber.at

Austria 2:

AuruTec Schmuck- und

Uhrentechnik Baumgartner KG
Aurgasse 9
6170 Zirl/Austria
Phone +43 664 535 6770
www.j-felber.at

Belgium:

Alexandre BVBA

Appelmansstraat 25-27
Empire Shopping Center
2018 Antwerp/Belgium
Phone +32 3 213 00 39
www.alexandreschool.com

Cyprus:

B.J.P – Panagiotidou Elli & Sia Epe

Villara 1
54625 Thessaloniki/Greece
Phone +30 2310555270
www.bj.p.gr

Czech Republic:

Advantage-fl.cz s.r.o.

Soukenická 11
11000 Prague 1/Czech Republic
Phone +420 222 310 298
www.advantage-fl.cz

Denmark:

Aktiv Guld A/S

Vallensbækvej 46
2625 Vallensbæk/Denmark
Phone +45 43 66 20 00
www.aktivguld.com

Finland:

K.A. Rasmussen Oy

Etelaranta 14
00130 Helsinki/Finland
Phone +358 10 337 50 00
www.rasmussen.fi

France 1:

Tena Butty

116, Chemin de Mialouze
26130 Montsegur Sur Lauzon/France
Phone +33 475 98 10 22
www.tena-butty.com

France 2:

TBRP Paris (Pouget Pellerin, Robur)

15, rue de Montmorency
75003 Paris/France
Phone +33 1 42 74 44 11
www.pouget-pellerin.com
www.robur-fr.com

France 3:

Schwartzmann Fisseau Cochot

12 rue Rene Payot
25503 Morteau/France
Phone +33 381 67 18 34
www.schwartzmann.com

Germany 1:

Rudolf Flume Technik GmbH

Hachestrasse 66
45127 Essen/Germany
Phone +49 201 1899 0
www.flume.de

Germany 2:

Horbach GmbH

Hauptstrasse 139 A
55743 Idar-Oberstein/Germany
Phone +49 6781 458 97-0
www.horbach-technik.de

Greece:

B.J.P – Panagiotidou Elli & Sia Epe

Villara 1
54625 Thessaloniki/Greece
Phone +30 23105 55270
www.bj.p.gr

Iceland:

Handverkshúsið EHF

Dalvegi 10-14
201 Kopavogur/Iceland
Phone +354 511 0014
www.handverkshusid.is

Ireland:

Betts Metal Sales Limited

49-63 Spencer Street
Birmingham, B18 6DE/England
Phone +44 121 233 2413
www.bettsmetalsales.com

Italy 1:

Luigi Dal Trozzo S.A.S.

Via Claudio Treves 26
20090 Vimodrone/Italy
Phone +39 02 2885871
www.luigidaltrozzo.it

Italy 2:

Garbarino & Titonel srl

Via del Lavoro 3
15048 Valenza/Italy
Phone +39 0131 924 264
www.garbarinotitonel.com

Netherlands 1:

Bijou Moderne B.V.

Edisonlaan 36-38
2665 JC Bleiswijk/Netherlands
Phone +31 10 529 66 00
www.bijoumoderne.nl

Netherlands 2:

Diaset BV.

Utrecht/Netherlands
Phone +31 30 230 02 14
www.diaset.nl

Norway:

K.A.Rasmussen AS

Postboks 4455
2326 Hamar/Norway
Phone +47 625 12 710
www.karasmussen.no

Poland 1:

W. Kociuba S.J.

ul. Rakowicka 1
31-511 Krakow/Poland
Phone +48 12 430 36 79
www.wkociuba.pl

Poland 2:

Firma Jubilerska K. Brzuchowski

ul. Hetmańska 20
40-560 Katowice/Poland
Phone +48 50 173 30 93
brzuchowski.pl

Portugal:

Maquinouro LDA

Rua Engenheiro Adelino Amaro da Costa
1140/44
4420-005 Gondomar/Portugal
Phone +351 22 483 55 51
www.maquinouro.pt

Russia:

Jewellery Air

Ul. Bumazhnaya, 17 / 109
190020 St. Petersburg/Russia
Phone +7 495 16 28 477
www.jewelleryair.com

Slovakia:

Advantage-fl.cz s.r.o.

Soukenická 11
11000 Prague 1/Czech Republic
Phone +420 222 310 298
www.advantage-fl.cz

Spain :

Chamorro y Moreno, S.A

C/ Isla de Sicilia
1 - 3º B, Edificio Guadalcanal
28034 Madrid/Spainien
Phone +34 91 315 20 49
www.comrashop.es

Sweden 1:

Sargenta AB

Singelgatan 6B
212 28 Malmö/Sweden
Phone +46 401 26 550
www.sargenta.se

Sweden 2:

Aktiv Guld AB

Vallensbækvej 46
2625 Vallensbæk/Denmark
Phone +46 22 27 80 100
www.aktivguld.com

Switzerland:

Artsupport GmbH

Glattalstrasse 222
8153 Rumläng/Switzerland
Phone +41 44 818 18 18
www.artsupport.ch

Turkey

Piramit Teknik Malzene SAN. VE TIC. A.S.

Vizyon Park Merkez Plaza C1
Blok Zemin Kat No. 39/40
34197 Yenibosna / Istanbul
Turkey
Phone +90 212 511 11 86
www.piramtek.com

United Kingdom 1:

Betts Metal Sales Limited

49-63 Spencer Street
Birmingham, B18 6DE/England
Phone +44 121 233 2413
www.bettsmetalsales.com

United Kingdom 2:

Cooksongold

59-83 Vittoria Street
Birmingham, B1 3NZ /England
Phone +44 121 200 2120
www.cooksongold.com

OTHER COUNTRIES



Albania, Algeria, Belarus, Bosnia and Herzegovina, Bulgaria, Croatia, Estonia, Hungary, Latvia, Libya, Lithuania, Luxembourg, Macedonia, Malta, Mauretania, Moldova, Montenegro, Morocco, Romania, Serbia, Slovenia, Tunisia, Ukraine:

The official European website about professional tools for stone setters, engravers and jewellers. For all your tools, training and support!

grseurope.com info@grseurope.com #grseurope

WORKHOLDING SOLUTIONS FROM THE MIND OF

JURCO

(artSUPPORT)

TOOLS AND EQUIPMENT

www.artsupport.ch

info@artsupport.ch

Tel. +41 (0)44 818 18 18